

TKF **VERTICAL** **CONVEYORS**

The Space Savers

- Continuous
- Reciprocating



TKF 4-STRAND CONTINUOUS VERTICAL CON

... high-speed up-or-down service, up to 35 loads/minute

When your material handling system requires up-or-down movement, *VERTICAL* conveyors make better use of the building cube than any other handling system.

TKF specializes in vertical conveyors, offering all of their inherent space-saving advantages, plus a great deal more! With over 40 years' experience, TKF provides a number of cost-effective benefits ... High speed ... Simple low maintenance design ... Selection of standardized units from modular components ... Fully automatic operation ... and a choice of continuous or reciprocating types. All this enables TKF to provide unbiased recommendations for each application. The continuous types are described on these two pages; the reciprocating types on page 4 of this brochure.

TKF continuous flow vertical conveyors are designed to accept a load horizontally, convey it vertically and discharge it again horizontally, all in a continuous non-stop operation. Loading and unloading is in a "Z" pattern. Powered conveyors synchronized to the lift platform speed are used in loading and unloading, and are designed for the specific product to be handled, using roller, belt or chain.

High-speed continuous flow. TKF Continuous Vertical Conveyors utilize chain speeds up to 120 FPM, which provides an output up to 35 loads/minute depending on overall product dimensions.* And the flow is *continuous*, 24 hours a day if desired, with never a wait for the return of a carrier. Each load is carried on a moving platform fastened between continuous loops of chain. The platform carrier is unique in that it is rigid in the horizontal load-carrying position, yet flexible in the opposite direction ... allowing it to rotate around the sprockets to travel in minimum space on the return phase of each cycle.

Vertical travel up to 80 ft. TKF Vertical Conveyors are capable of lifting a load to elevations as high as 80 feet. The infeed height should be at least 18 to 28" (see spec table), but can be lower by using a pit.

Vertical travel completely automatic. The TKF Continuous Vertical Conveyor is fully automatic as the moving flight receives each load from the feed conveyor, conveys it up (or down) to the unload station, and discharges it onto the receiving conveyor. No operator attention is required except for routine maintenance. Systems may be single direction or reversible, as required.

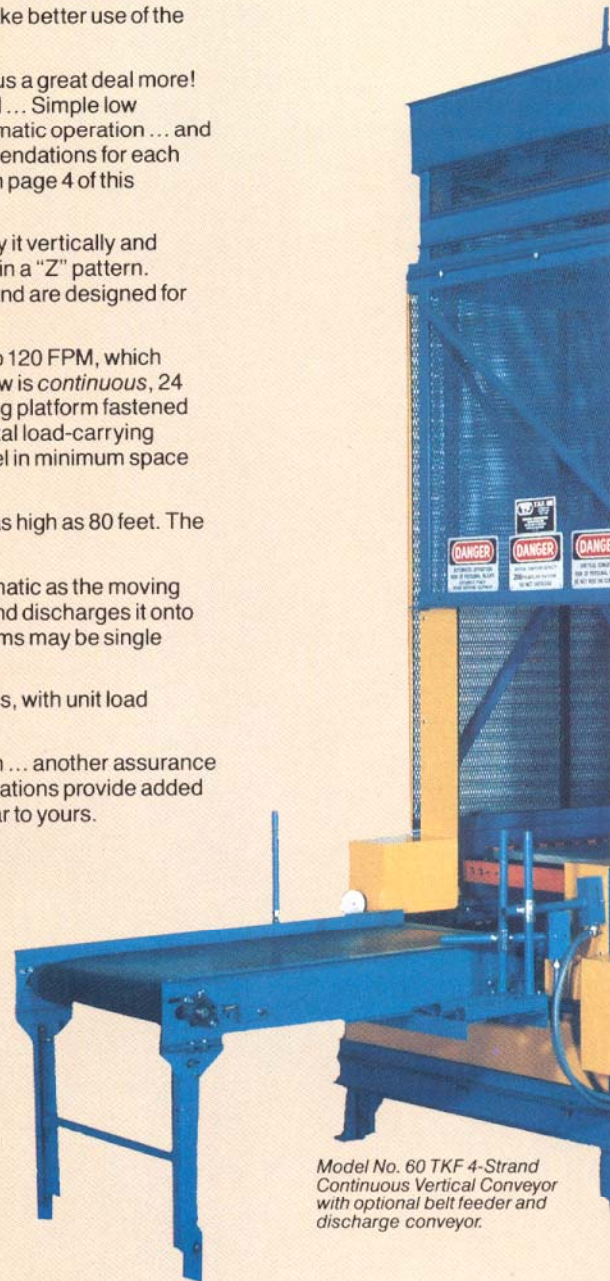
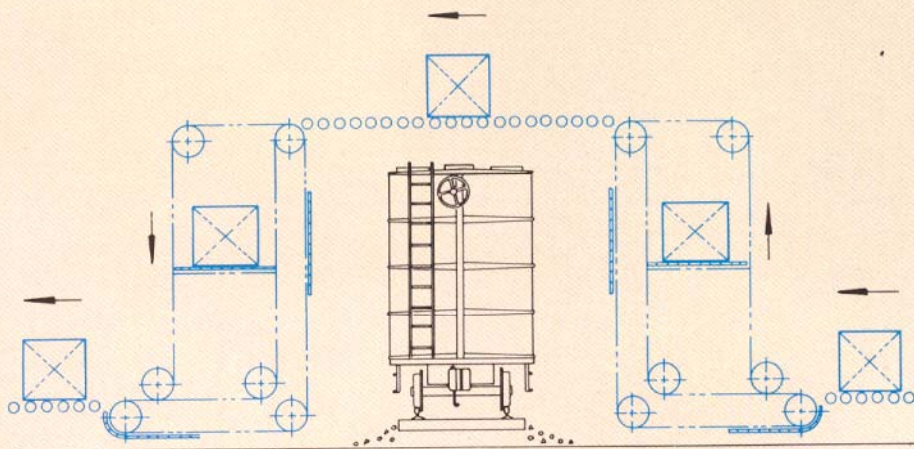
Capacities up to 4000 lbs. TKF offers Continuous Vertical Conveyors in five standard models, with unit load capacities ranging from 5 to 4000 lbs.

Fully guaranteed. TKF Vertical Conveyors are warranted for one year from date of installation ... another assurance of dependable operation and reliable service. TKF customers in scores of industries and applications provide added evidence of satisfactory service by TKF ... ask us for names and locations of applications similar to yours.

Complete turnkey systems from design to installation. TKF Engineers have the experience and capabilities to recommend, design, manufacture and install entire handling systems, integrating overhead conveyors, vertical conveyors, various types of special equipment and all necessary controls on a turnkey basis. While assembled from pre-engineered stock modular components, TKF Vertical Conveyors are individually customized for each individual application and built to customer specifications.

Call TKF first for vertical conveyors. Refer to "Information Required for Quotation" (see bottom of next page) and send us your inquiry. We will be glad to provide recommendations and estimates for your application with no obligation.

*Consult TKF for higher speeds, greater heights or special applications.

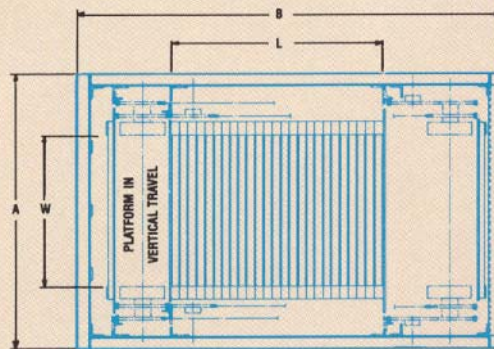
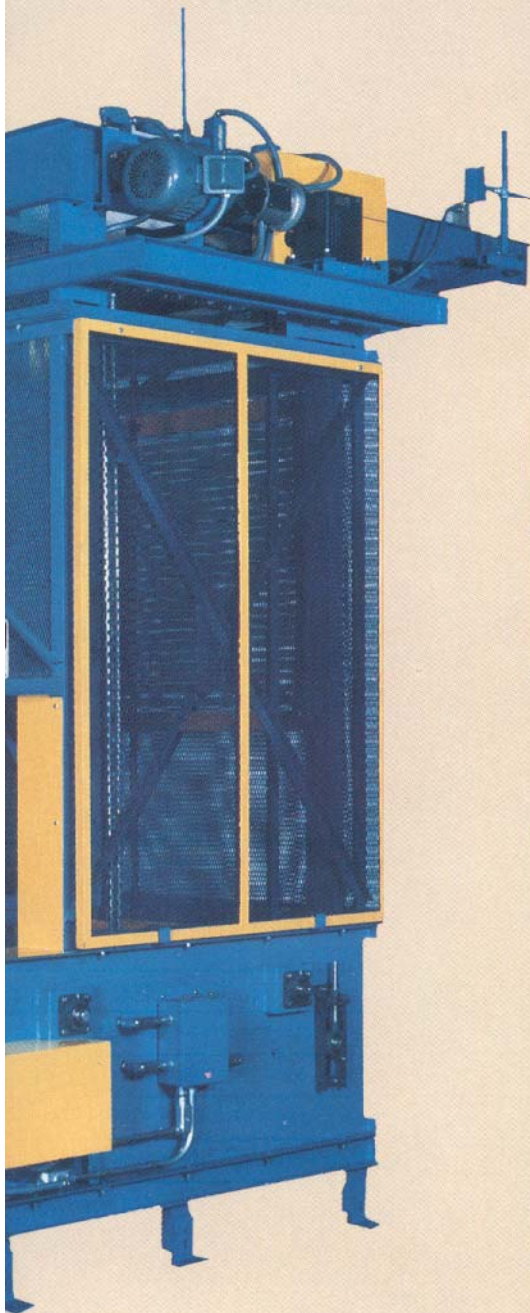


Model No. 60 TKF 4-Strand
Continuous Vertical Conveyor
with optional belt feeder and
discharge conveyor.

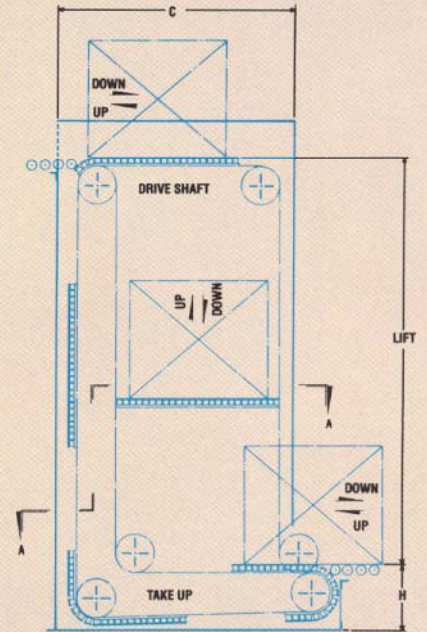
How vertical conveyors increase plant

- Provide multi-level transportation in minimum space — product travels straight up and down, no incline required.
- Cut floor space requirements up to 90%!
- Utilize vacant air space above the floor level. Ideal for operations that are automatic or require little or no supervision.
- Open up mezzanines and balconies to more effective use.

VEYORS



BASE (View 'A-A')



SIDE VIEW

Continuous Vertical Conveyors — Brief Specifications

Model No.	Unit Load Capacity	Load Carrying Platform			Base		Shaft Length C
		Length L	Width W	Min. Ht. H	Width A	Length B	
60	200 lbs.	25 ¹ / ₂ " - 49 ¹ / ₂ "	18" - 60"	18"	W + 23"	L + 36 ¹ / ₈ "	L + 23 ⁷ / ₈ "
80	600	34" - 102"	24" - 84"	24"	W + 30 ⁷ / ₈ "	L + 50 ³ / ₁₆ "	L + 35"
100	1000	42 ¹ / ₂ " - 105"	30" - 96"	28"	W + 39 ⁷ / ₈ "	L + 56 ¹ / ₁₆ "	L + 37 ¹ / ₁₆ "
120	2500	45" - 108"	36" - 96"	28"	W + 44"	L + 59 ¹ / ₂ "	L + 40 ¹ / ₁₆ "
160	4000	51" - 108"	36" - 96"	28"	W + 48 ³ / ₈ "	L + 61 ³ / ₁₆ "	L + 41 ³ / ₁₆ "

Chain speed Up to 120 FPM

Rate Up to 35 loads/min.

Lift height Up to 80 ft.

Controls Programmable controllers or relay logic

Information required for quotation:

1. Description of products including size, weight and contact surface
2. Maximum handling rate (quantity per minute)
3. Infeed and discharge elevations
4. Plant electrical requirements
5. Special conditions, such as extreme temperature, moisture, etc.
6. Direction of travel (up, down, or reversible)

Efficiency

- Transport up and over machinery, aisles or other obstacles ... avoid expensive production changes.
- Clear floor areas for more efficient flow of fork lifts, pedestrian traffic, etc.
- Provide a high degree of flexibility in plant layout.

