

SPARE PARTS MANUAL FOR TKF VALULIFT CONTINUOUS VERTICAL CONVEYOR



PREPARED BY: T.K.F. INC.
726 MEHRING WAY
CINCINNATI, OHIO 45203
PHONE: (513) 241-5910
FAX: (513) 651-2792
WEBSITE: <http://www.tkf.com>



TKF PROJECT N^o. _____

CUSTOMER P.O. N^o. _____

DATE PRICING SENT _____

REV 120/05
VALULIFT-PARTS

INDEX-SPARE PARTS

INDEX

Page 2

ORDERING INFORMATION

Page 3

FAX COVER SHEET

Page 4

PLATFORM PARTS -

1) PLATFORM -EXPLODED VIEW DRAWING

Page 5

2) PLATFORM SPARE PARTS LIST

Page 6

BASE SECTION -

1) BASE-EXPLODED VIEW DRAWING

Page 7

2) BASE SPARE PARTS LIST

Page 8 & 9

DRIVE SECTION -

1) DRIVE-EXPLODED VIEW DRAWING

Page 10

2) DRIVE SPARE PARTS LIST

Page 11 & 12

INFEED CONVEYOR -

1) INFEED EXPLODED VIEW DRAWING

Page 13

2) INFEED SPARE PARTS LIST

Page 14

DISCHARGE TRANSITION SECTION-

1) TRANSITION EXPLODED VIEW DRAWING

Page 15

2) TRANSITION SPARE PARTS LIST

Page 16

SPARE PARTS


How To Order

1. Determine which parts to have as spares or need to be replaced on your TKF VALULIFT continuous vertical conveyor.
2. Use the following drawings in this manual to help you locate the parts needed and use their item numbers to find the ordering information on the following parts lists.
3. Locate the equipment tag on the electrical panel, base section, or infeed conveyor(s) which was included with the vertical conveyor unit you purchased. See example tag at bottom.
4. Use the **project number** on the equipment tag as the first number when ordering spare parts. This number should be followed by the **mark number** which corresponds to the particular part you need.
5. Contact TKF, Inc. at (513) 241-5910 for placing spare parts orders or use the following fax cover sheet and part lists in this manual to fax requests to (513) 651-2792. On fax requests be sure to fill-in **project number** and quantity of **spares wanted**.

Valulift stdup-disp 5/02

Ordering Example:

For ordering the trail bar item No.1 on Drawing-A on project No. Axxx, the ordering code is (Axxx -606)

 T.K.F., INC. 726 MEHRING WAY CINCINNATI, OHIO	PROJECT NO . <input type="text"/>
	EQUIPMENT NO . <input type="text"/>
	SERIAL NO . <input type="text"/>



VALULIFT SPARE PARTS FAX REQUEST

TO: SALES DEPARTMENT

FROM: _____

COMPANY: TKF, INC.

COMPANY: _____

FAX # (513) 651-2792

NO. OF PAGES, INCLUDING COVER SHEET _____

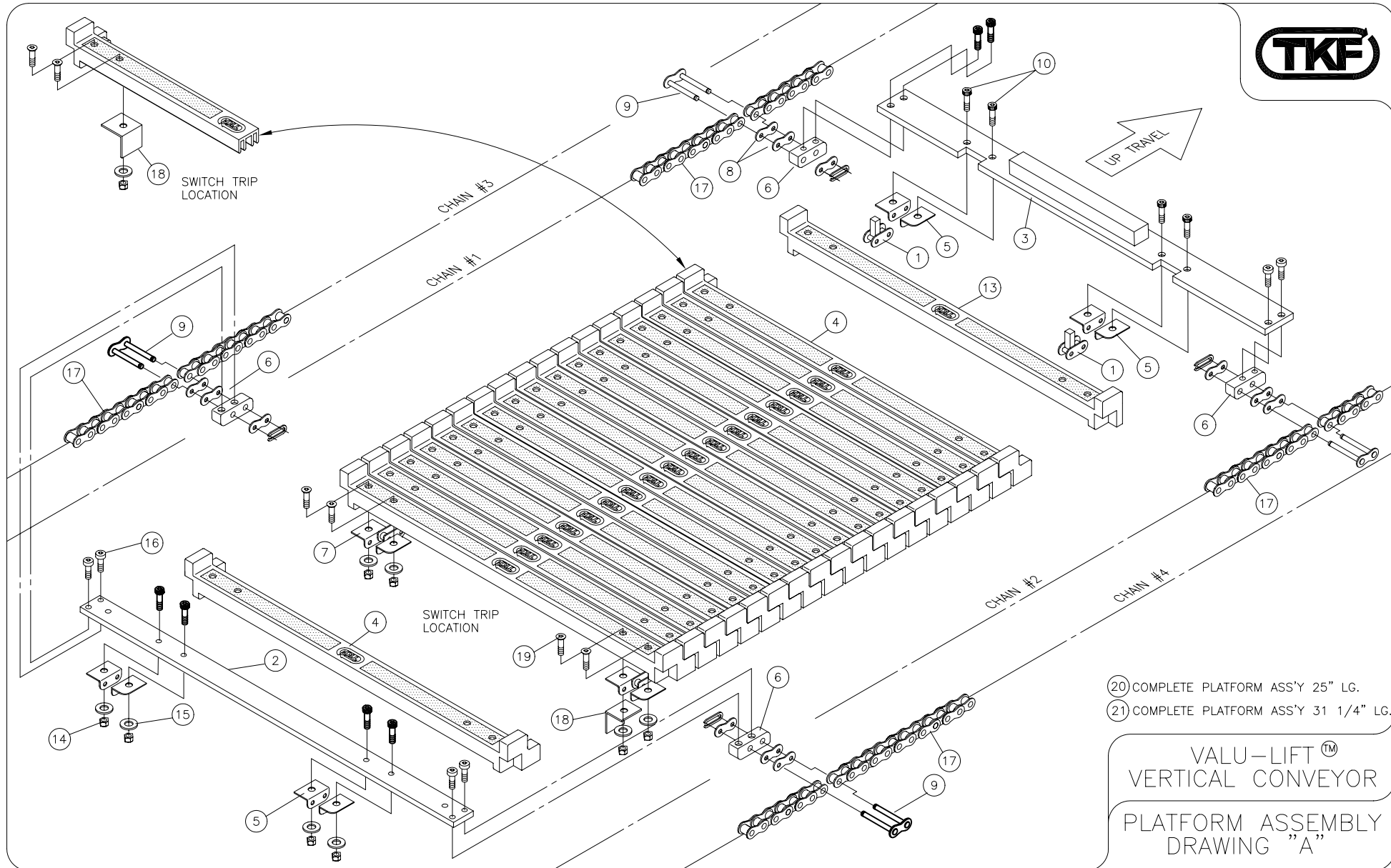
PLEASE FILL - IN THE FOLLOWING INFORMATION:

TKF PROJECT NUMBER: _____

VALULIFT SERIAL NUMBER 50 _____

YOUR PHONE NUMBER: _____

DATE: _____



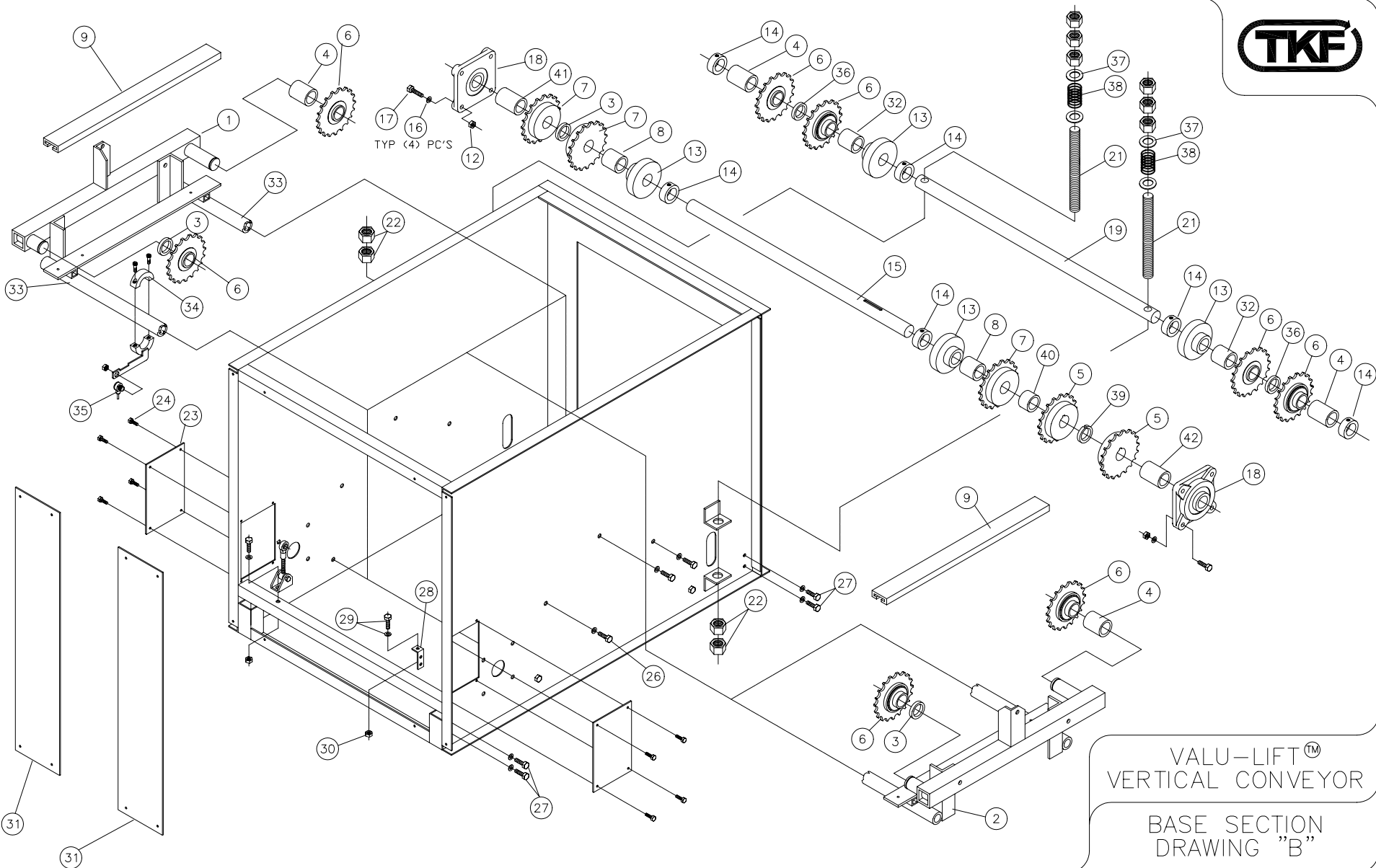
- ②0 COMPLETE PLATFORM ASS'Y 25" LG.
- ②1 COMPLETE PLATFORM ASS'Y 31 1/4" LG.

VALU-LIFT™
VERTICAL CONVEYOR
PLATFORM ASSEMBLY
DRAWING "A"

REVISED 5/02 (F)

PLATFORM (REF DWG. A) HEAVY DUTY REV. F

PARTS LIST AND DESCRIPTION					
<i>Item #</i>	<i>DESCRIPTION</i>	<i>TKF Part No.</i>	<i>#/ Platform</i>	<i># Rec.</i>	<i>Price Each.</i>
1	Locking link	#3016	2	1	
2	Trail Bar-HD	#3029	1	1	
3	Lead Bar-HD	#3028	1	1	
4	Intermediate Slat-HD	#3015	19 or 23	2	
5	End Link	#3017	4	6	
6	Platform Attach Block-HD	#3006	4	1	
7	Platform Chain-for 25" Lg. Platform	#3018	1 set of 2	1	
7	Platform Chain for 31" Lg. Platform	#3019	1 set of 2	1	
8	Connecting Link Side Plate (part of #3082- not sold separately)	3082SP			
9	RC50-2 Connecting Link	#3082	4	2	
10	Trail/Lead Bar Mounting Bolt		8		
13	Lead Slat-HD	#3022	1		
14	Lead/Trail Bar Mounting Nut		8		
15	Lead/Trail Bar Mounting Lock Washer		8		
16	Lead/Trail Bar Mounting Bolt		8		
17	RC50 Chain x _____ Pitches	3098_P	4		
18	Prox. Switch Actuator-HD	#3020	2	2	
19	Platform Mounting Screw		76		
20	Complete 25" Long Platform Assy-HD	3014-25			
21	Complete 31" Long Platform Assy-HD	3014-31			



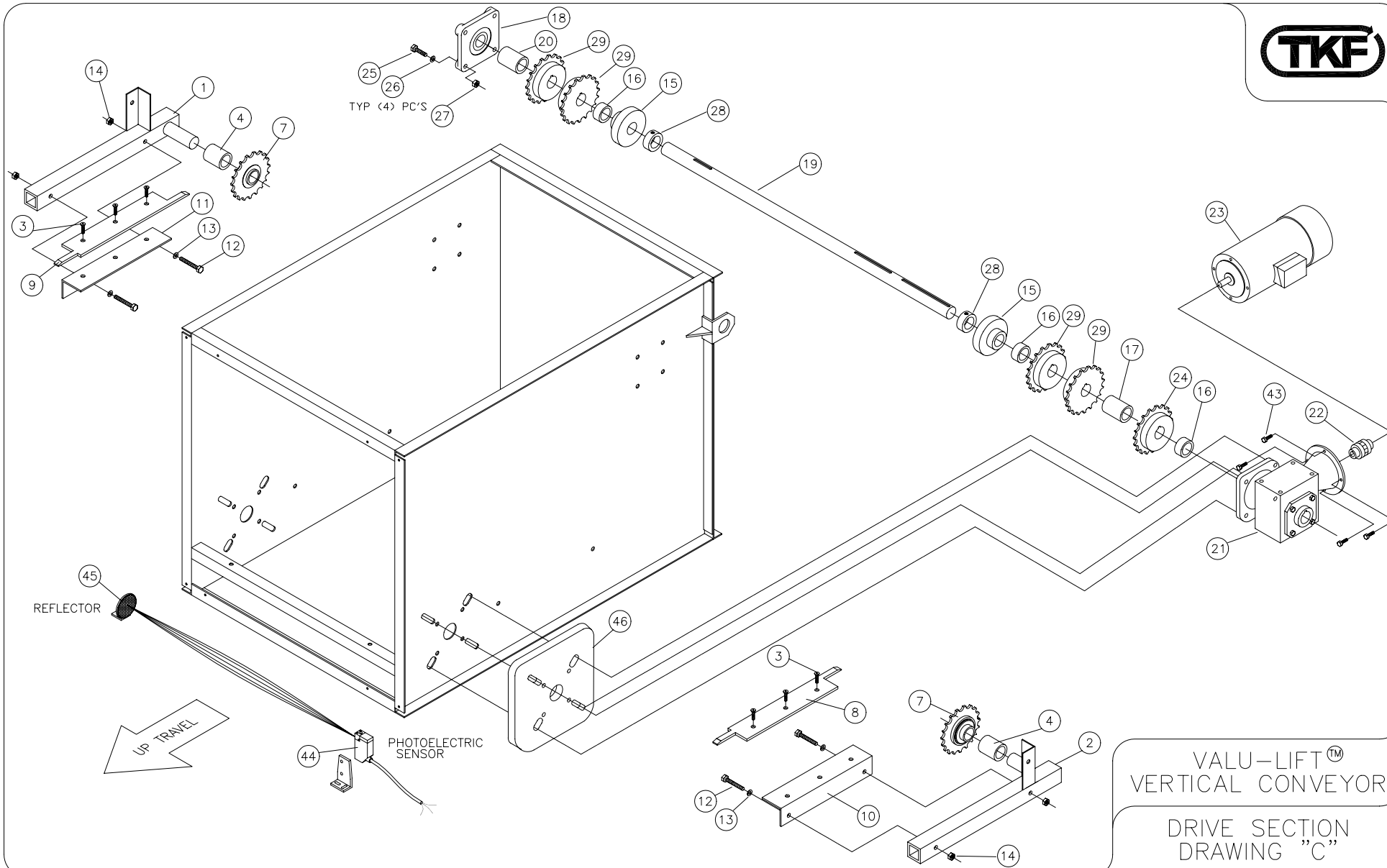
VALU-LIFT™
VERTICAL CONVEYOR
BASE SECTION
DRAWING "B"

REVISED 5/02 (F1)

BASE SECTION (REF DWG B) REV F

PARTS LIST AND DESCRIPTION					
Item #	DESCRIPTION	TKF Part No.	# / Lift	# Rec.	Price Each
1	LH Platform Support and Idler Shaft Assembly-Base	#3204L	1		
2	RH Platform Support and Idler Shaft Assembly- Base	#3204R	1		
3	PVC Spacer-1/4" Long		2		
4	PVC Spacer-1 11/16" Long		2		
5	Infeed Drive Sprocket	#3041	2		
6	Stub/Take-up Sprocket	#3160	8		
7	Idler Sprocket	#3026	3	4	
8	PVC Spacer 1 3/4" Long		2		
9	Base Wear Strip	#3038	2	2	
10	Base Drive Sprocket (void)	#3023	1		
11	Base Belt Pulley (void)	#3024	1		
12	Nut		8		
13	Idler Wheel	#3027	4	2	
14	Set Collar	#3070	6		
15	Idler Shaft	#3048	1		
16	Washer		8		
17	Mounting Bolt		8		
18	Idler Bearing	#3071	2		
19	Take Up Shaft	#3707	1		
20	PVC Spacer 2 5/16" Long (void)		2		
21	Take-Up Adjusting Rod	#3217	2		
22	Take-Up Adjusting Nut		10		
23	Access Cover		2		
24	Access Cover Mounting Bolt		8		

PARTS LIST AND DESCRIPTION					
Item #	DESCRIPTION	TKF Part No.	# / LIFT	# Rec.	Price Each
26	Platform Support Mounting Bolt		6		
27	Support Mounting Bolt		8		
28	Clutch Anti-Rotation Clip	#3045	1		
29	Clutch Anti-Rotation Bolt		1		
30	Clutch Anti-Rotation Nut		1		
31	Infeed Guards	3102	2		
32	PVC Spacer 5/8" Long		2		
33	Stiffening Bar		2		
34	Photocell Bracket	#3033	1	1	
35	Photocell-platform detection	#3078	1	1	
36	PVC Spacer 1" Long		2		
37	Take-up Retaining Washer		4		
38	Take-up Holding Spring	#3077	2		

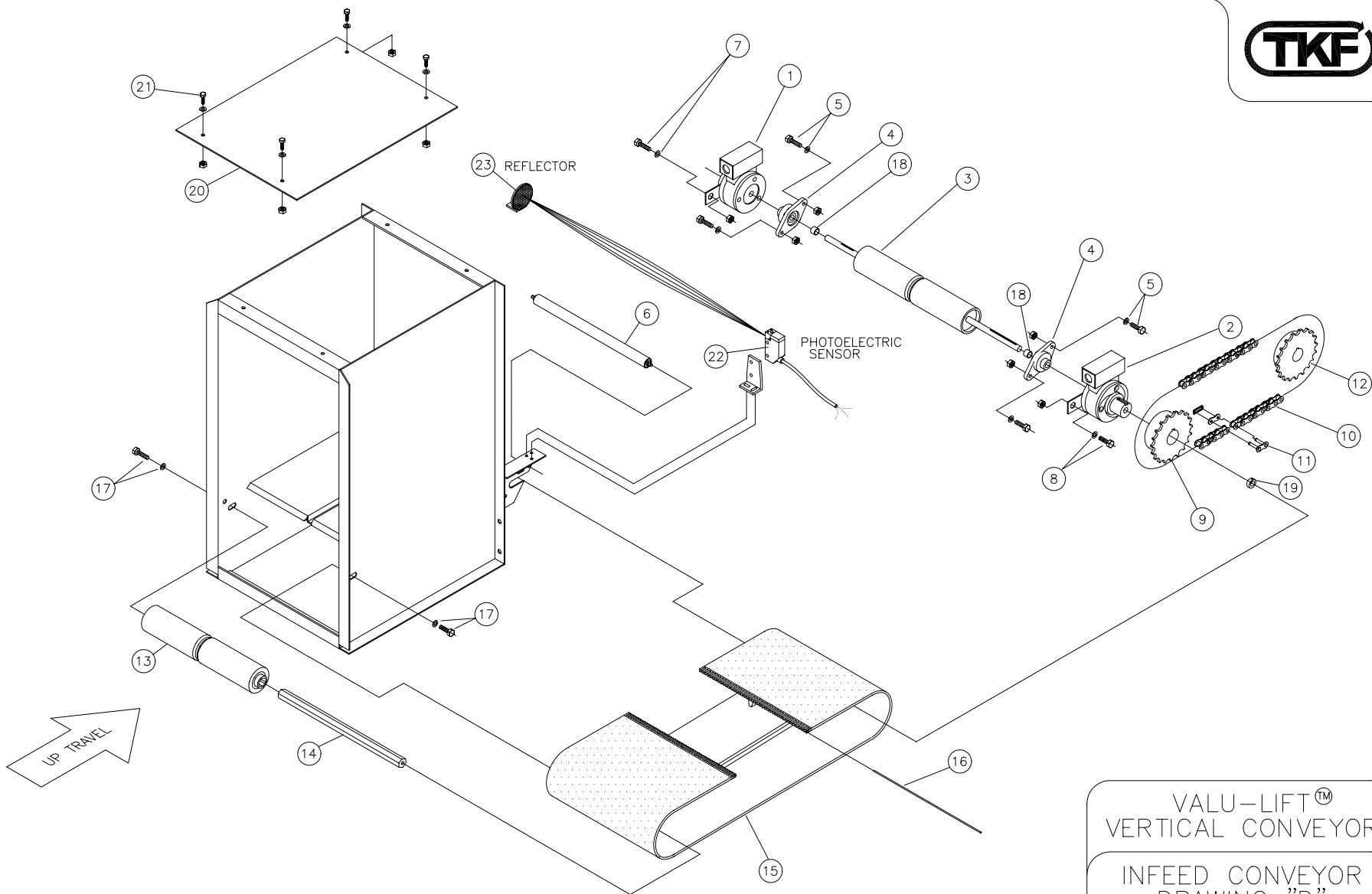


REVISED 5/02 (F)

DRIVE SECTION (REF DWG C) REV F

PARTS LIST AND DESCRIPTION					
Item #	DESCRIPTION	TKF Part No.	# / Lift	# Rec.	Price Each
1	LH Platform Support-Drive	#3409L	1		
2	RH Platform Support-Drive	#3409R	1		
3	Wear Bar Mounting Bolt		6		
4	PVC Spacer-7/16" Long	#3415	2		
7	Stub/Take-up Sprocket (Same as B6)	#3160	2		
8	RH Drive Wear Strip	#3039	1	1	
9	LH Drive Wear Strip	#3040	1	1	
10	Drive Platform Support Angle LH	#3401L	1		
11	Drive Platform Support Angle RH	#3401R	1		
12	Drive Platform Support Angle Bolt		4		
13	Drive Platform Support Angle Wash.		4		
14	Drive Platform Support Angle Nut		4		
15	Idler Wheel (Same as B13)	#3027	2		
16	PVC Spacer 1 1/16" Long	#3404	2		
17	PVC Spacer 1 29/32" Long	#3408	2		
18	Drive Bearing	#3071	1	2	
19	Drive Shaft	#3708	1		
20	PVC Tubing-4 1/16" Long	#3406	2		
21	Reducer-Size/Ratio(S/R) 920,924,926 / 20,25,30,50	#3035 (S/R)	1	1	
22	Coupling	#3036	1		
23	Motor (3/4-1, 1 1/2, 2) HP	3089-HP	1	1	
24	Drive Infeed Drive Sprocket	#3041	1		
25	Bearing Mounting Bolt		4		

PARTS LIST AND DESCRIPTION					
Item #	DESCRIPTION	TKF Part No.	# / LIFT	# Rec.	Price Each
26	Bearing Mounting Washer		4		
27	Bearing mounting Nut		4		
28	1 7/16" set collar	#3070	2		
29	1 Set of 4 Drive Sprockets	#3042	1 set of 4		
43	Reducer Mounting Bolt		4	1	
44	Photocell Square Body W/ Bracket	#3079	1	1	
45	Reflector #BRT-3 (3" round)	#3130	1	1	
46	Reducer Mounting Plate	#3031	1		

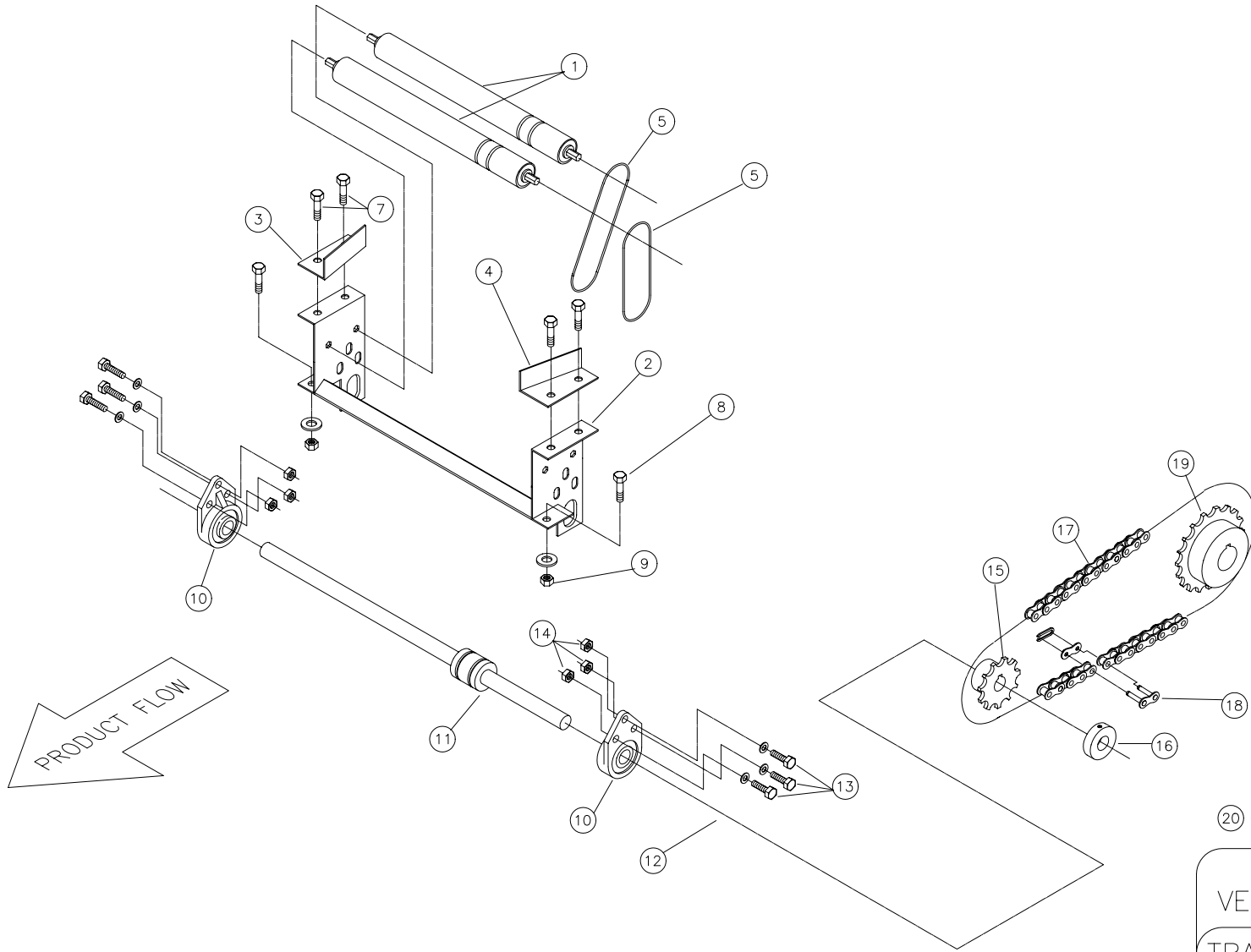


VALU-LIFT™
VERTICAL CONVEYOR
INFEED CONVEYOR
DRAWING "D"

REVISED 5/02 (F)

INFEED CONVEYOR (REF DWG D) REV F

PARTS LIST AND DESCRIPTION					
Item #	DESCRIPTION	TKF Part No.	# / Lift	# Rec.	Price Each
1	Infeed Brake	#3067	1	1	
2	Infeed Clutch	#3074	1	1	
3	Infeed Drive Shaft and Pulley	#3050	1	1	
4	Infeed Shaft Bearing	#3075	2	2	
5	Bearing Mounting Bolt		2		
6	Transition Roller	#3065	1		
7	Brake Anti Rotation Bolt				
8	Clutch Anti Rotation Bolt				
9	Infeed Clutch Sprocket	#3052	1		
10	Infeed Drive Chain x 41 Pitches Total	#3068	1		
11	RC50 Connecting Link	#3017	1		
12	Base Drive Spkt Shown on Dwg B	#3041	1		
13	Infeed Tail Pulley	#3056	1		
14	Infeed Belt Tail Shaft	#3051	1		
15	Infeed Belt	#3066	1	1	
16	Infeed Belt Connecting Pin		1		
17	Tail pulley mounting bolt		2		
18	¾" diameter Steel tube		2		
19	5/8" diameter set collar	3072	1		
20	Infeed Conveyor Top Guard		1		
21	Top Guard Mounting Bolt		4		
22	Photocell Square Body w/ Bracket	#3079	1		
23	Reflector #BRT-3 (3" round)	#3130	1		



20 COMPLETE TRANSITION ASSEMBLY

VALU-LIFT™
VERTICAL CONVEYOR
TRANSITION ASSEMBLY
DRAWING "E"

REVISED 5/02 (F)

DISCHARGE TRANSITION SECTION (REF DWG. E) REV F

PARTS LIST AND DESCRIPTION					
Item #	DESCRIPTION	TKF Part No.	# / Lift	# Rec.	Price Each
1	Discharge Rollers	#3069	2	2	
2	Discharge Side Channel (RH & LH)	#3054	2		
3	RH Discharge Guide Rails	#3055R	1		
4	LH Discharge Guide Rails	#3055L	1		
5	O-Ring	#3099	3	4	
7	Guide Rail Mounting Bolt		4		
8	Side Channel Mounting Bolt		2		
9	Side channel nut w/ washer		2		
10	3 Bolt Bearing	#3088	2	2	
11	O-Ring Drive Pulley	#3057	1		
12	Discharge Drive Shaft	#3064	1		
13	Bearing Mounting Bolt		6		
14	Bearing Mounting Nut w/ washer		6		
15	Driven Sprocket	#3087	1	1	
16	Set Collar	#3073	1		
17	RC50 Chain x 38 Pitches	#3086	1		
18	RC50 Connecting Link	#3017	1		
19	Drive Sprocket 1 7/16" Bore	#3042	1	1	
20	Complete Transition Assy.	#3037	1		